

LINDA COURT

Heitman Drive, Spring Valley, NY 10977 (845) 200-3376



Located in the Rockland County town of Spring Valley, N.Y. is Linda Court, a collection of 239 rental units. This community boasts one and two bedroom residences which range in size from 500 to 1,530 square feet. Each newly renovated residence features a dishwasher, refrigerator, oven, CAC, hardwood floors throughout, walk-in closets and a patio or balcony (per plan). On site amenities include laundry facilities and 24-hour emergency maintenance.

www.LindaCourtNY.com (845) 200-3376



Linda Court Apartments and its owners are committed to equal housing opportunity. We and our employees and agents do not discriminate against any tenant or prospective tenant on the basis of race, color, national origin, religion, sex, familial status, disability, lawful source of income, marital status, age, sexual orientation, gender identity or expression, or military status.

WF-LindaCt112219



Linda Court

Bedrooms	Name	Baths	Area	Pricing
1	1A with Dining Area	1	800 sq. ft.	\$1,685
1	1E	1	605-623 sq. ft.	\$1,590 - \$1,610
1	1C	1	722-723 sq. ft.	\$1,640 - \$1,750
1	1D with Dining Area	1.5	623 sq. ft.	\$1,660
1	1B w/Dining Area/ Den	1	725-733 sq. ft.	\$1,740 - \$1,810
2	2C with Dining Area	1.5	1,040-1,060 sq. ft.	\$2,370 - \$2,420
2	2B with Dining Area	1.5	1,070-1,080 sq. ft.	\$2,250 - \$2,420

*All prices are subject to change.

Apartment Amenities

- Private Patio or Balcony

Community Amenities

- 24-Hour Emergency Maintenance
- Playground
- Cable Ready
- Security Lighting
- Laundry Facilities
- Verizon FIOS Available

Appliances

- Dishwasher
- Refrigerator/Freezer
- Oven/Range
- Range Hood

Rental Office Hours

Monday 9-5	Tuesday 9-5	Wednesday 9-5	Thursday 9-5	Friday 9-4	Saturday closed	Sunday closed
---------------	----------------	------------------	-----------------	---------------	--------------------	------------------

When you decide to rent with Garden Communities, the following items will be required when you submit your application:

- Non-refundable online application processing Fee. \$20 per applicant
- \$200 online deposit is required to reserve an apartment. To be applied to your Security Deposit upon approval; or refunded if your application is declined.
- Two Current Pay Stubs
- Valid Photo ID
- Social Security Card

Linda Court Apartments and its owners are committed to equal housing opportunity. We and our employees and agents do not discriminate against any tenant or prospective tenant on the basis of race, color, national origin, religion, sex, familial status, disability, lawful source of income, marital status, age, sexual orientation, gender identity or expression, or military status.

We are an equal opportunity provider. We do not discriminate on the basis of race, color, sex, national origin, religion, handicap or familial status.

Linda Court

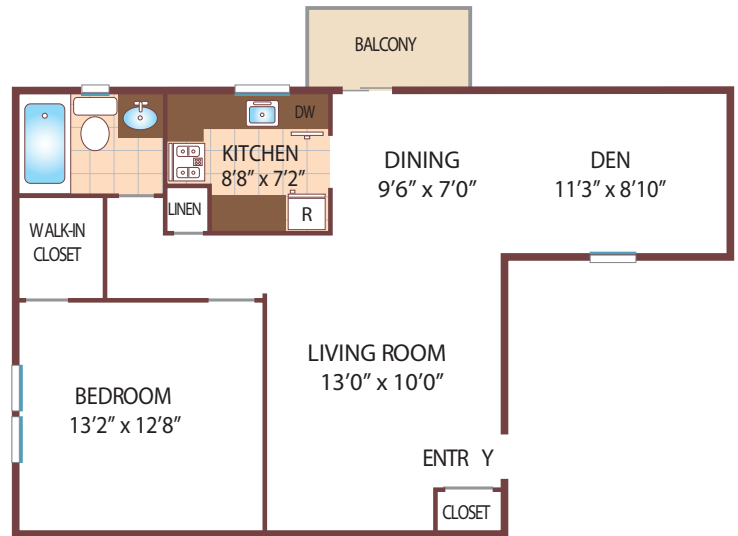
One Bedroom Floor Plan

Plan 1A-with Dining Area
with 1 Baths, 800 sq. ft.



One Bedroom Floor Plan

Plan 1B-with Dining Area and Den
with 1 Bath, 735 sq. ft.



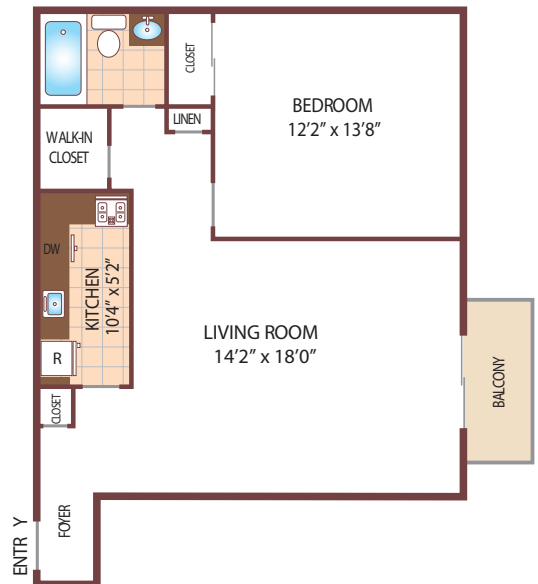
One Bedroom Floor Plan

Plan 1C
with 1 Bath, 725 sq. ft.



One Bedroom Floor Plan

Plan 1E
with 1 Bath, 623 sq. ft.



All dimensions, positions, locations and details are approximate.

All rent prices and community information subject to change.

Linda Court Apartments and its owners are committed to equal housing opportunity. We and our employees and agents do not discriminate against any tenant or prospective tenant on the basis of race, color, national origin, religion, sex, familial status, disability, lawful source of income, marital status, age, sexual orientation, gender identity or expression, or military status.

73-P Heitman Drive, Spring Valley, NJ 10977
P: 845.200.3376

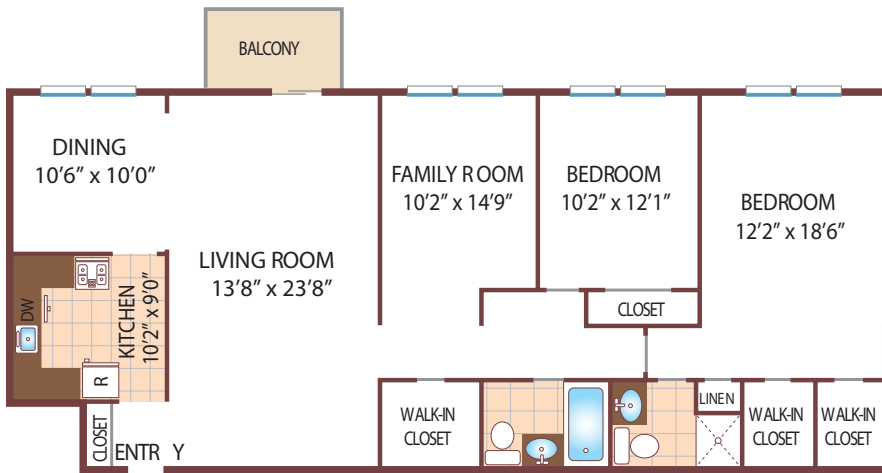


www.LindaCourtNY.com
LindaCourt.Rental@GardenCommunities.com

Linda Court

Two Bedroom Floor Plan

Plan 2A-Deluxe w/ Family Room
with 2 Baths, 1320 sq. ft.



Two Bedroom Floor Plan

Plan 2B w/ Dining Area
with 1 and 1/2 Baths, 1070 sq. ft.



Two Bedroom Floor Plan

Plan 2C w/ Dining Area
with 1 and 1/2 Baths, 1040 sq. ft.



All dimensions, positions, locations and details are approximate.
All rent prices and community information subject to change.

Linda Court Apartments and its owners are committed to equal housing opportunity. We and our employees and agents do not discriminate against any tenant or prospective tenant on the basis of race, color, national origin, religion, sex, familial status, disability, lawful source of income, marital status, age, sexual orientation, gender identity or expression, or military status.

73-P Heitman Drive, Spring Valley, NJ 10977
P: 845.200.3376



www.LindaCourtNY.com
LindaCourt.Rental@GardenCommunities.com