

# VICTORIA GARDENS

69-P Edison Court, Monsey, NY, 10952 (845) 208-2561



Victoria Gardens is a collection of 328 one, two and three bedroom apartments located in the Rockland County town of Monsey, N.Y. This community boasts spacious interiors that range from 815 to 1,400 square feet. The amenity package for these desirable apartment homes includes a dishwasher, refrigerator, oven, hardwood flooring, air conditioner, walk-in closet and patio or balcony (per plan). An onsite laundry facility and 24-hour emergency maintenance are available for resident convenience.

[www.VictoriaGardensNY.com](http://www.VictoriaGardensNY.com) (845) 208-2561



WE ARE AN EQUAL HOUSING OPPORTUNITY PROVIDER. WE DO NOT DISCRIMINATE ON THE BASIS OF RACE, COLOR, SEX, NATIONAL ORIGIN, RELIGION, HANDICAP OR FAMILIAL STATUS.

WF-VictoriaGar020817



# Victoria Gardens

Bedrooms	Name	Baths	Area	Pricing
1	1A	1	0 sq. ft.	
1	1C	1	0 sq. ft.	
1	1E	1	0 sq. ft.	
1	1F	1	0 sq. ft.	
1	1D	1	0 sq. ft.	
1	1B	1	0 sq. ft.	
2	2B Duplex	2	0 sq. ft.	
2	2C	1.5	0 sq. ft.	
2	2D	1.5	0 sq. ft.	
2	2A Duplex	2	0 sq. ft.	
3	3B Duplex	2	0 sq. ft.	
3	3A Duplex	2	0 sq. ft.	

\*All prices are subject to change.

## Apartment Amenities

- Air Conditioning
- Private Patio or Balcony

## Community Amenities

- 24-Hour Emergency Maintenance
- Security Lighting
- Laundry Facilities
- Verizon FIOS Available
- Playground

## Appliances

- Dishwasher
- Refrigerator/Freezer
- Oven/Range
- Range Hood

## Rental Office Hours

Monday 9-5	Tuesday 9-5	Wednesday 9-5	Thursday 9-5	Friday 9-4	Saturday closed	Sunday closed
---------------	----------------	------------------	-----------------	---------------	--------------------	------------------

When you decide to rent with Garden Communities, the following items will be required when you submit your application:

- Non-refundable online application processing Fee. \$20 per applicant
- \$200 online deposit is required to reserve an apartment. To be applied to your Security Deposit upon approval; or refunded if your application is declined.
- Two Current Pay Stubs
- Valid Photo ID
- Social Security Card

We are an equal opportunity provider. We do not discriminate on the basis of race, color, sex, national origin, religion, handicap or familial status.

# Victoria Gardens - Data Sheet

## One Bedroom Floor Plan

Model 1A

with 1 Bath, 845 sq. ft.



## One Bedroom Floor Plan

Model 1B

with 1 Bath, 820 sq. ft.



## One Bedroom Floor Plan

Model 1C

with 1 Bath, 915 sq. ft.



## One Bedroom Floor Plan

Model 1D

with 1 Bath, 880 sq. ft.



All dimensions, positions, locations and details are approximate.

All rent prices and community information subject to change.

# Victoria Gardens - Data Sheet

## One Bedroom Floor Plan

Model 1E

with 1 Bath, 815 sq. ft.



## One Bedroom Floor Plan

Model 1F

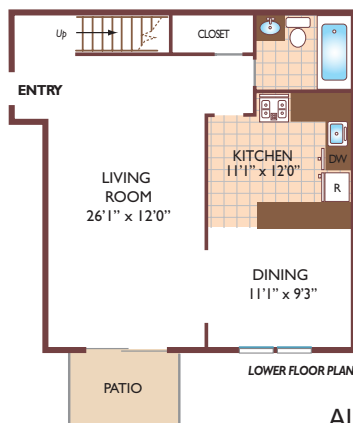
with 1 Bath, 735 sq. ft.



## Two Bedroom Floor Plan

Model 2A - Duplex

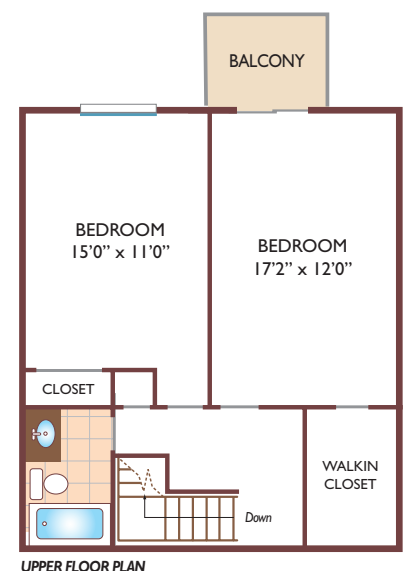
with 2 Baths, 1390 sq. ft.



## Two Bedroom Floor Plan

Model 2B-Duplex

with 2 Baths, 1265 sq. ft.



All dimensions, positions, locations and details are approximate.

All rent prices and community information subject to change.

# Victoria Gardens - Data Sheet

## Two Bedroom Floor Plan

Unit 2C

with 1 and 1/2 Baths, 1060 sq. ft.



## Two Bedroom Floor Plan

Model 2D

with 1 and 1/2 Baths, 1155 sq. ft.



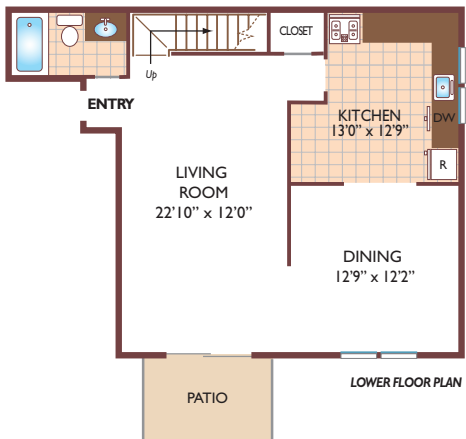
## Three Bedroom Floor Plan

Model 3A - Duplex

with 2 Baths, 1405 sq. ft.



UPPER FLOOR PLAN



LOWER FLOOR PLAN

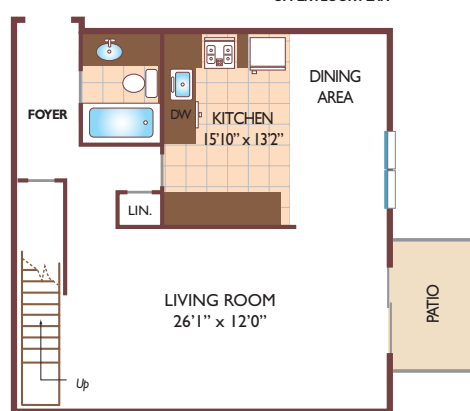
## Three Bedroom Floor Plan

Model 3B-Duplex

with 2 Baths, 1400 sq. ft.



UPPER FLOOR PLAN



LOWER FLOOR PLAN

All dimensions, positions, locations and details are approximate.

All rent prices and community information subject to change.